

# SECURELINK



# Strategic Consulting Division



## Strategic Readiness

- » Cyber Risk Management
- » Compliance Advisory
- » Cybersecurity Governance
- » Business Continuity



## Incident Management

- » Crisis Response
- » Disaster Recovery
- » IR Training
- » Root Cause Analysis



## On Demand Services

- » Ad-hoc Requests
- » Audit Management
- » Compliance Checks
- » DPIA



## Cybersecurity Transformation

- » Key Risk Management
- » Data Governance
- » Data Privacy & Classifications
- » SOC Transformation



## Strategy Evolution

- » Strategy Planning
- » Maturity & Benchmarking
- » Strategic Roadmap
- » Cybersecurity Accelerators



## Cybersecurity Responsibilities

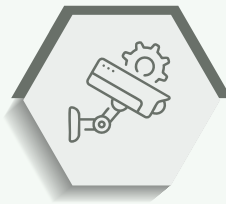
- » Segregation of Duties
- » Career-path Alignment Assessment
- » Skill Enhancement Trainings
- » Training & Awareness Program

# Technology Risk Management Division



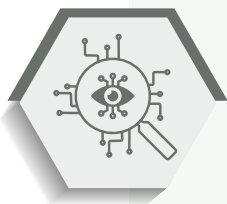
## Crisis Response

- » Incident Response
- » Event Analysis
- » Compromise Assessment
- » Digital Forensics



## Penetration Testing as a Service (PTaaS)

- » Pen Testing
- » Secure Code Review
- » Red Teaming
- » Wireless SSID Assessment



## Threat Modeling

- » Architecture Risk Analysis
- » Application Threat Modelling
- » Red Team Collaboration Modelling
- » Zero Trust Architecture Modelling



## Risk Analytical Assessments

- » Data Security Posture Management
- » Identity Threat Detection & Response
- » Network Detection & Response
- » User and Entity Behavior Analytics



## Cyber Threat Management

- » Breach and Attack Simulation (BAS)
- » Attack Surface Management (ASM)
- » Telecom Security
- » Application Performance Testing



# Assurance Workforce Division



## Strategic Consulting as a Service

- » Compliance Management
- » Data Privacy Officer
- » BCMS Implementation
- » IMS Implementation



## Technology Risk Management as a Service

- » Red Teaming
- » Access Management
- » SOC Management
- » Threat Management



## Cloud as a Service

- » Cloud Infrastructure
- » Cloud Cybersecurity
- » Cloud Solution Architect
- » Cloud Auditor



## IT Operations

- » IT Operations Management
- » Data Center Management
- » Product Admin
- » Virtual CISO and CISO Advisory



## AI as a Service

- » AI Data Analytics
- » AI Developer
- » AI Specialist
- » AI Solution Architect





# Solutions



## Risk Management

- » Managed Detection & Response
- » Threat Intelligence
- » GRC Services
- » Learning Management System



## Proactive Security

- » Continuous Threat Exposure Management
- » Managed Threat Hunting
- » Penetration Testing as a Service
- » Data Governance & Protection

# Technologies



## Offensive Security

- » Breach Attack Simulation
- » Attack Surface Management
- » Application Security Testing



## Compliance Management

- » GRC Tool
- » Data Privacy & Classification Tools
- » Disaster Recovery Automation



## People Security Management

- » Security Awareness & Training
- » Email AI Assist
- » Anti-phish AI



## Infrastructure Security

- » Telecom Security Tool
- » Network Detection & Response
- » Automated Penetration Testing

# Cloud & Artificial Intelligence Division



## Cloud Consultancy

- » Cloud Penetration Testing
- » Cloud Security Consultancy
- » Cloud Compliance & Certifications
- » Cloud Data Discovery



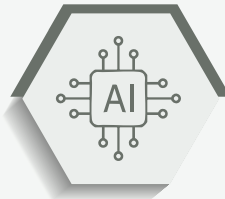
## AI Consultancy

- » AI Compliance Assurance
- » Cybersecurity for AI
- » AI Business Analysis
- » AI Strategy Development



## AI Cybersecurity Assistant

- » Compliance Digital AI Assistant
- » HR & CRM Digital AI Assistant
- » Reporting AI Assistant
- » Bespoke AI Assistant



## AI as a Service

- » AI Digital Assistant
- » Cybersecurity AI Engine
- » Data Lake Providers
- » AI Platform



Office 1601,  
Mazaya Business Avenue - BB2,  
Jumeirah Lake Towers, Dubai, UAE



Tulip Tower, 2nd Floor,  
Office 205, King Fahad Road,  
PO Box: 295557, Zip code: 11351, Riyadh - KSA

[info@securelinkme.net](mailto:info@securelinkme.net) | [www.securelinkme.net](http://www.securelinkme.net)

UAE | KSA | KUWAIT | QATAR | BAHRAIN | OMAN | EGYPT | PAKISTAN  
JORDAN | MOROCCO | TURKEY | SOUTH AFRICA | NIGERIA